

PS-3202; Wireless Force Sensor Battery Replacement Instructions

Reference: Battery part number 540-115; Li-Poly 300 mAH

Recommended Equipment: (PS-3299; Battery Replacement Tool Set)



Torx T5 Driver



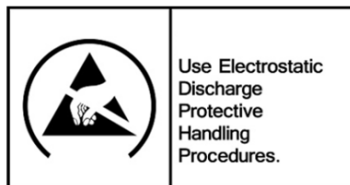
Phillips Screwdriver



Replacement Battery



CAUTION: Failure to use proper ESD protection could result in damage to the electronics.



Step 1: Position the Sensor on a surface as shown. Note the location of the (5) Phillips Screws (circled).



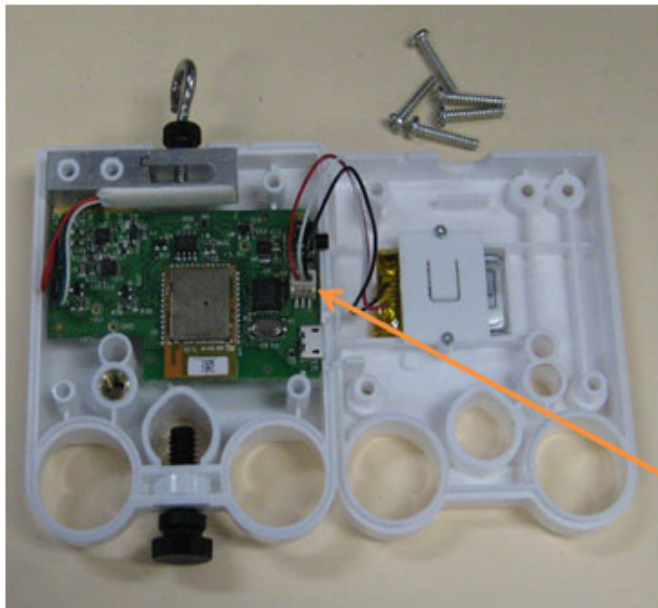
Phillips Screw, 5 Places

PASCO Form Number	Description	Date		Revision
013-16104	PS-3202 Battery Replacement Instructions	05-05-22	Page 1 of 3	B

Step 2: Unscrew and remove the (5) Phillips Screws with a Phillips Screwdriver.



Step 3: While holding the bottom with one hand, lift and rotate the top cover to the right.



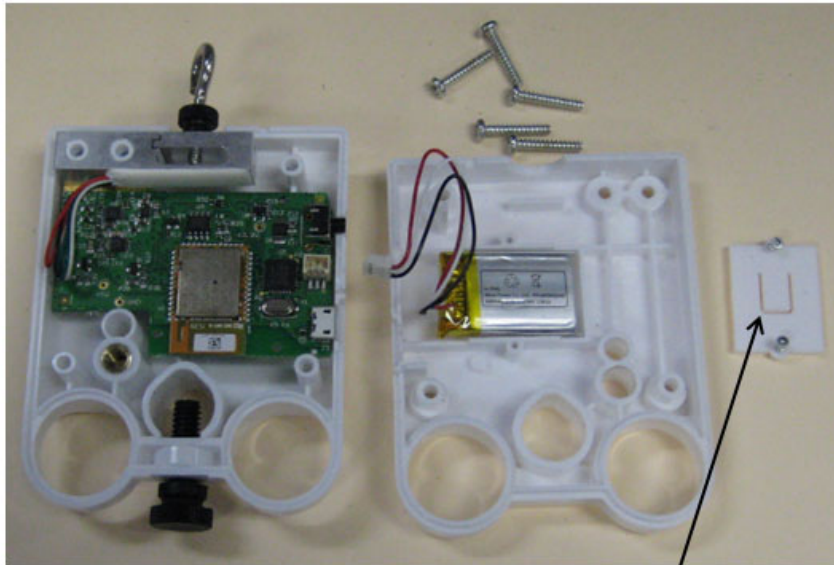
Note: red wire location



Battery Connector

PASCO Form Number	Description	Date		Revision
013-16104	PS-3202 Battery Replacement Instructions	05-05-22	Page 2 of 3	B

Step 4: Remove the battery strap screws (2) with the T5 Screwdriver and remove the battery strap. Unplug the battery from its connector. Remove the battery and add the replacement battery at the location shown (see above picture) and position the wiring similar to the routing shown. Plug the battery into its mating connector and reverse the steps noted above to complete the reassembly.



Battery strap

Battery Replacement and Disposal Instructions (Reference):

Batteries contain chemicals that, if released, may affect the environment and human health. Batteries should be collected separately for recycling, and recycled at a local hazardous material disposal location adhering to your country and local government regulations. To find a battery recycling drop-off location, please contact local waste disposal service or the product representative.



The battery or batteries used in PASCO products are marked with the European Union symbol for waste batteries (above) to indicate the need for separate collection and recycling. For small batteries, the symbol is printed on the packaging.

If you need further assistance, please contact Technical Support at support@pasco.com or through www.pasco.com on chat. To access chat through your browser, please enable all cookies on our website.

PASCO Form Number	Description	Date		Revision
013-16104	PS-3202 Battery Replacement Instructions	05-05-22	Page 3 of 3	B